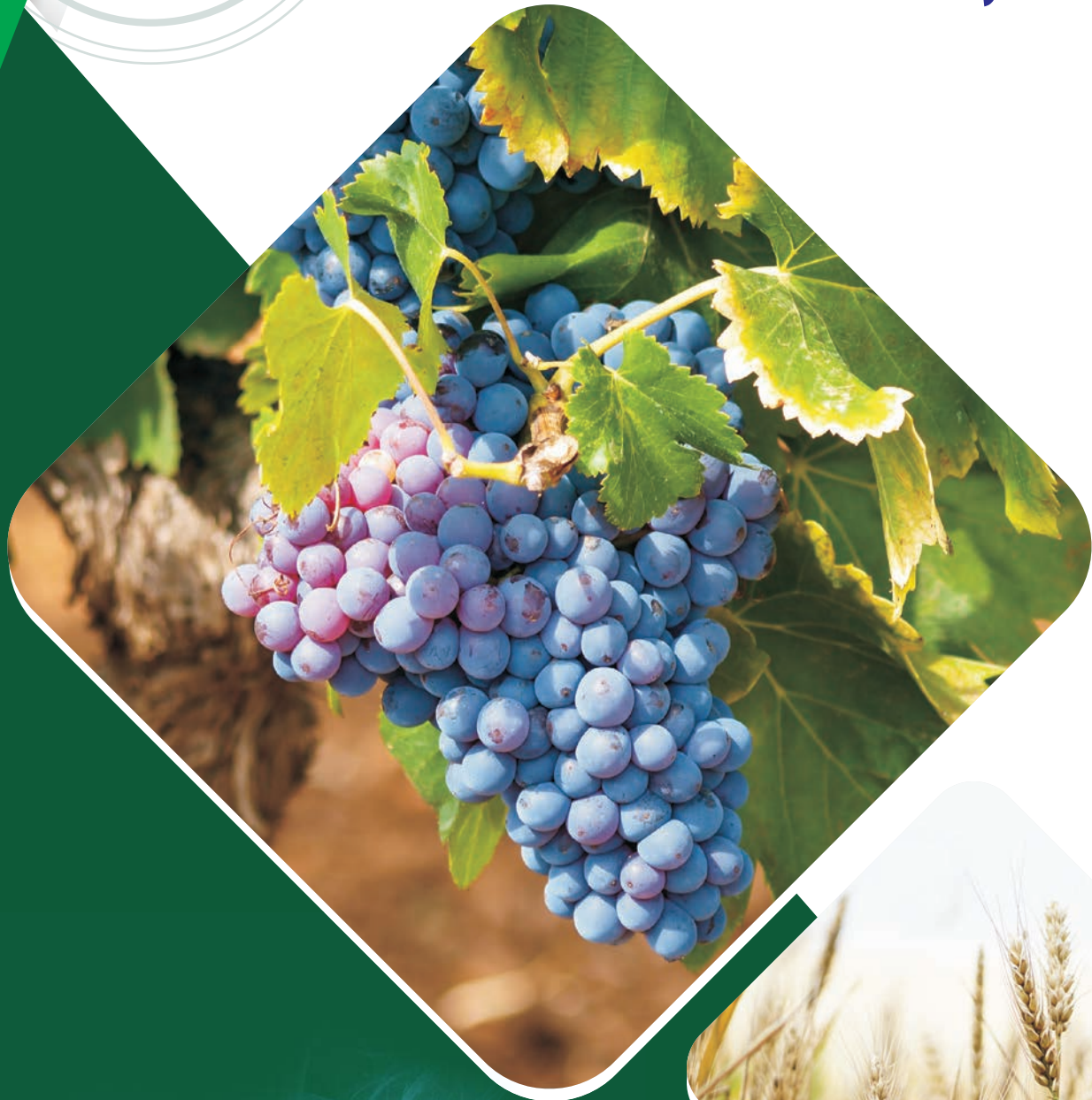




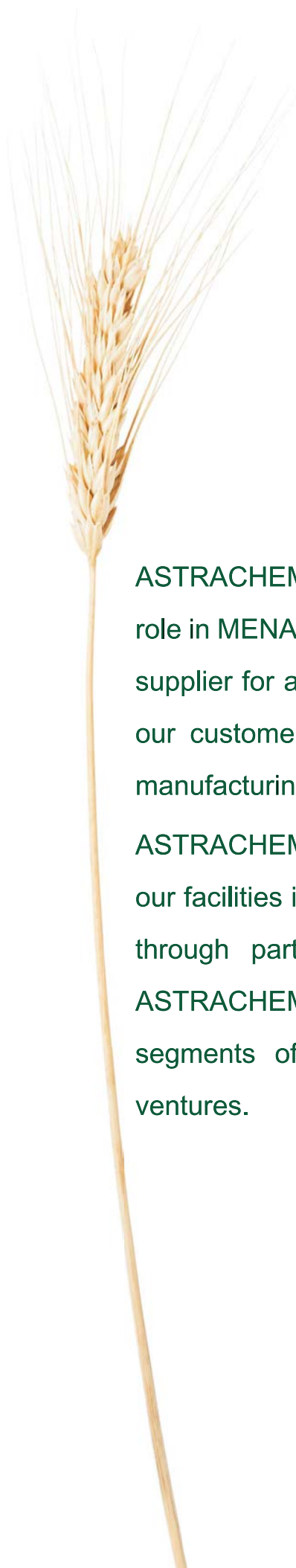
أستراكيم
ASTRACHEM

**We Give a New
Meaning to Quality**



- PESTICIDES
- FERTILIZERS
- PUBLIC HEALTH
- VETERINARY





ASTRACHEM is a major contributor with an innovative role in MENA, Turkey and CIS regions. As an integrated supplier for a wide network of distributors and farmers, our customers rely on our extensive knowledge and manufacturing experience.

ASTRACHEM's superior quality products produced at our facilities in Saudi and Turkey have been successful through partnerships with renowned multinationals. ASTRACHEM will continue to thrive within many segments of the industry through upcoming joint ventures.

Contents

Fertilizers:

- Compound soluble fertilizers.
- Granular fertilizers.
- Single fertilizers.
- Fluid and suspension fertilizers.
- Trace elements products.
- Biostimulants and supplements.
- Florabelles.

Agrochemicals:

- Insecticides
- Acaricides
- Nematicides
- Fungicides
- Herbicides
- Plant Growth Regulators
- Adjuvants / Surfactants
- Crop Protection Solutions

Veterinary Products

Subsidiaries / Affiliates:

Turkey

ASTRACHEM Tarim
ASTRANOVA Tarim turkey@astrachem.net

Jordan

ASTRACHEM Jordan jordan@astrachem.net

Algeria

ASTRACHEM Saoudia EURL algeria@astrachem.net

Egypt

ASTRACHEM Egypt egypt@astrachem.net

Morocco

ASTRACHEM Maroc SARL maroc@astrachem.net

Oman

ASTRACHEM Oman oman@astrachem.net

Uzbekistan

ASTRACHEM -Tashkent uzbek@astrachem.net

Ukraine

ASTRACHEM -Ukraine Ltd. ukraine@astrachem.net

Syria

ASTRACHEM Syria syria@astrachem.net

India

Tamron Astra customercare@astrachem.net

China

Astrachem / Universal info@astrachem.net

Uae

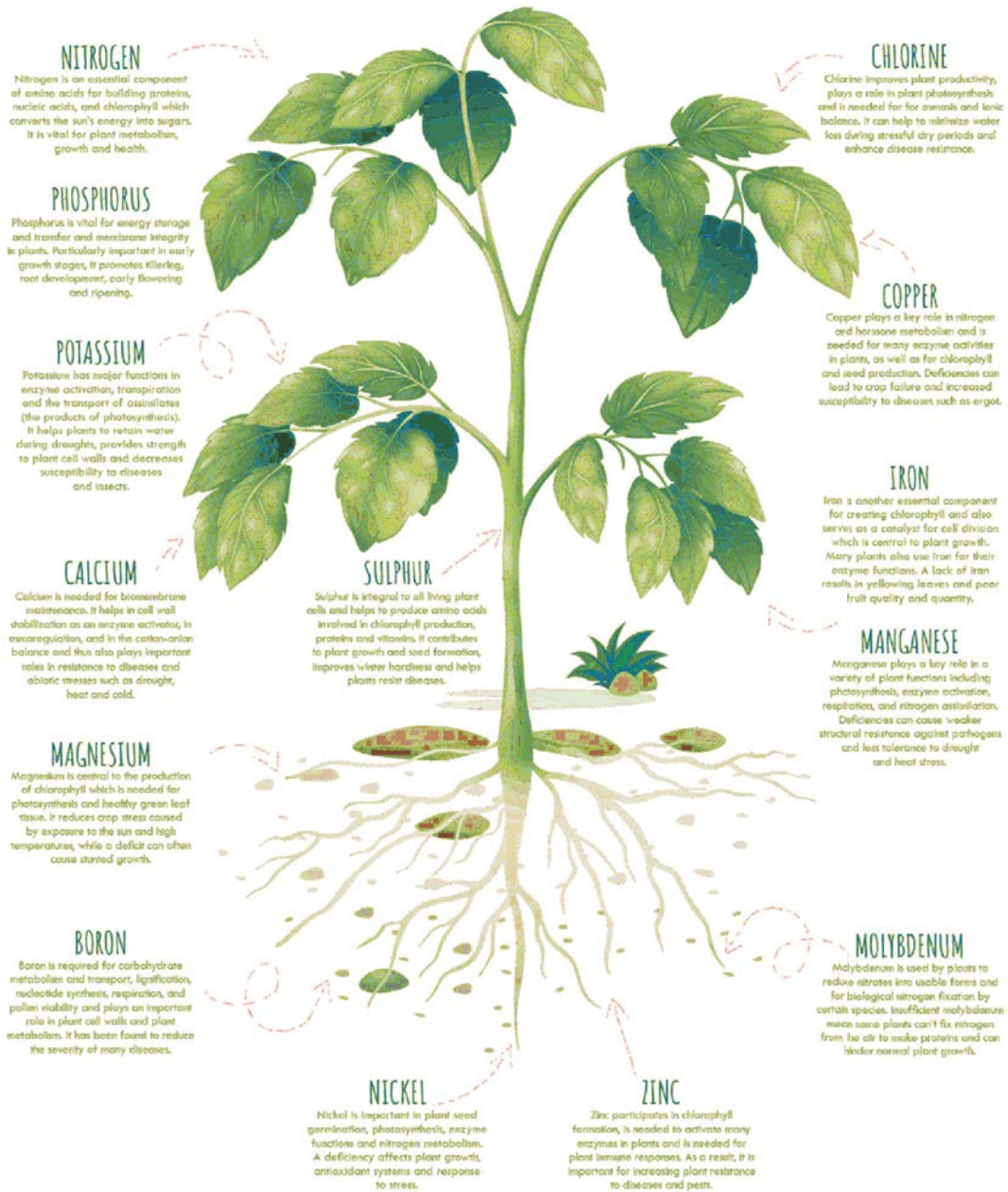
Astrachem - UAE Hussam.munawar@astrachem.net



- Export To Over 30 Countries.
- Over 600 Employees Worldwide.
- Subsidiaries In Over 15 Countries.



● Factory
○ Branches & Subsidiary



Fertilizers

GRANSOL[®]

Granular NPK

Premium quality chemically blended homogeneous Granular Fertilizer.

Is designed to give the plants optimum nutrients requirements as released gradually during the planting season.

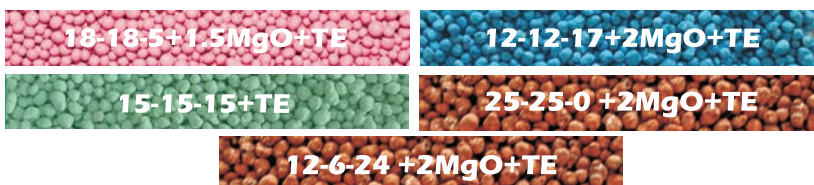
Is manufactured with the perfect particle's firmness to suite soil types across the region.

Formulas are designed to suite all kind of plants throughout the various stages of plants life.

It contains very little chlorine.

Contains optimum amounts of Trace Elements.

Available Formulas:



Trace Elements.

Fe	Zn	Mn
200ppm	100ppm	100ppm

Palm Secrets®

14-7-21+3HA+TE

12-6-24+6Ha+2MgO+TE

No1 fertilizer for Palm Trees

Palm Secrets: Special Fertilizer formula designed for Date Palms. **Organo-Chemical NPK** containing calculated nutrients and other contents for improving soil structure and its water holding capacity.

APPLICATION: Spread the fertilizer around the palm base and mix thoroughly with soil 3-4 applications during the season.

Palm Secrets: Fertilizer can also be added to various types of crops due to its unique composition.

Palm Secrets formula:

N	P	K	Ha	MgO	OM	TE
12%	6%	24%	6%	2%	8%	Fe, Mn, Zn, Cu, B, Mo



Palm Secrets
12-6-24+6Ha+2MgO+SC+TE



OPTIMAL

GRANULAR NPK

Premium quality chemically blended homogeneous Granular Fertilizer. Is designed to give the plants optimum nutrients requirements as released gradually during the planting season. Is manufactured with the perfect particle's firmness to suite soil types across the region. Formulas are designed to suite all kind of plants throughout the various stages of plants life. It contains very little chlorine. Contains optimum amounts of Trace Elements.

Available Formulas:



Trace Elements.

Fe	Zn	Mn
200ppm	100ppm	100ppm

MUSTANG

Granular

MUSTANG DP 17-45-0+TE

Di-Ammonium Phosphate Fertilizer.

Contains 17% total nitrogen and 45% phosphorus pentoxide(P_2O_5).

It is characterized by being in the form of homogeneous granules that are easy to handle by various agricultural machines.

Easy to dissolve.

Used for all crops and trees, as it contains a high percentage of Phosphorous, which works to strengthen the root system and increase flowering and the percentage of holding fruits. And It contains a percentage of Nitrogen that increase vegetative growth and production.

It contains Mn, Zn, and Fe trace elements.

MUSTANG K 5-0-45+10S+TE

Fertilizer that contains a high percentage of Potassium, which is used in the stage of coloring and enlarging the size of fruits.

Fertilizer that contains a percentage of the Nitrogen, which helps increase vegetative growth and double production.

It is recommended to use it for all types of crops such as open vegetables, greenhouses, fruit trees, palm trees, field crops (wheat, barley), forage, landscapes, and ornamental plants.

It contains sulfur, which is one of the most important elements for reducing soil salinity.

It contains Mn, Zn, and Fe trace elements.

MUSTANG 36-4-0+16SO3

NPK fertilizer granular soluble rich in nitrogen in the form of ammonia and homogeneous with sulfur.

It works to increase vegetative growth and increase the absorption of plant elements.

Fertilizer can be used as spreader and soluble.

It contains sulfur, which is one of the most important elements for reducing soil salinity.



+



+



SULFOPOTASH

GRANULAR

Potassium Sulfate Granular

0-0-50+18S

A major source of Potassium (potassium oxide 50%) and Sulfur 18%, both in a soluble form.

Important in lowering the pH of the soil, especially the root zone, and therefore it is important in fertilizing the alkali soil, as well as the dry soil and semi-dry soil, where the soil pH is higher.

Helps in the absorption of Phosphorous, as well as Iron, Zinc and Manganese. Potassium stimulates the growth of strong stems and gives the plant some disease resistance by enhancing the thickness of the outer cell walls. Adequate potassium can reduce moisture loss from growing plants, giving some resistance to drought.

Improves the quality of fruit fruits as well as different types of vegetables, as it gives them a new taste and better color and increases their portability for transport and storage. It also raises its nutritional value as it has a positive effect on starch, sugar and some types of vitamins inside the plant.

Potassium fertilizer is completely free of chloride, as it does not exceed 0.5%, which makes it one of the best types of potassium fertilizers that are soluble for fertilization in local soils, as well as for fertilizing crops sensitive to salt such as: potatoes, citrus fruits, grapes, berries and others.



Super Start

NP 10:35

+2%MgO+5%S+2%Zn

MICRO GRANULES

A micro granular fertilizer chemically blended that dissolves gradually with continuous irrigation.

Made from the finest raw materials to ensure balanced plant growth, especially at the beginning of planting.

Used in all agricultural applications where it can be spread before the soil is prepared for cultivation and it can be added after planting, open crops of vegetables, forage and potatoes. It can also be adding inside the greenhouses, fruit trees, palm trees and citrus fruits.

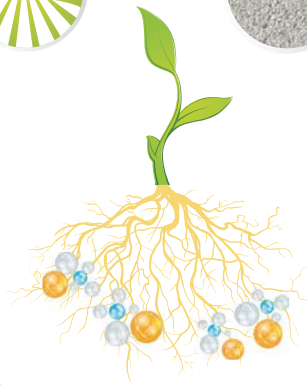
Contain Zn and Mg elements which very important for plants.

Is a great fertilizer for landscaping, gardens and ornamental plants as it keeps plants green and with a high percentage of phosphorus, it encourages flowering and strengthens the roots.

It contains sulfur, which has an effective role in lowering the pH of the soil to help absorption of fertilizers and trace elements.

Can be added by hand prose or by spreader machines.

Is free of chlorine and sodium.



NORUS

100% Water Soluble Fertilizer - Chlorine Free

Norus is a well – known famous brand of **ASTRACHEM** NPKs that has been subject to many years of R&D intensive work to reach the perfect formulas that assure the highest efficiency in absorbing nutrients by the plant and in the same time quick results.

Is manufactured of high quality ,pure technical grade raw materials.

Inputs and raw materials in Norus are based on Nitrates to assure the highest production and best fruit qualities.

Contains good ratios of Trace Elements that are all Chelated.

Raw materials in Norus Guarantees low PH to be freely used in Saline and high pH soils.

Raw materials in Norus Guarantees low EC to be freely used in Saline and high pH irrigation water.

Contains our secret recipe of Synergizers to assure the perfect performance.

Norus is 100% Soluble.

Is free of Chlorine and Sodium.

Is suitable for Foliar application and all kinds of Fertigation Systems.

All Trace Elements in Norus are from Chelated Sources – BASF Co.

MgO	Fe	Cu	Zn	Mn	Mo	B2O3
500ppm	750ppm	75ppm	250ppm	150ppm	20ppm	100ppm

Formulas:

20.20.20+TE

12.12.36+TE

15.30.15+TE

15.15.30+TE

20.10.20+TE

28.14.14+TE

17.10.27+TE

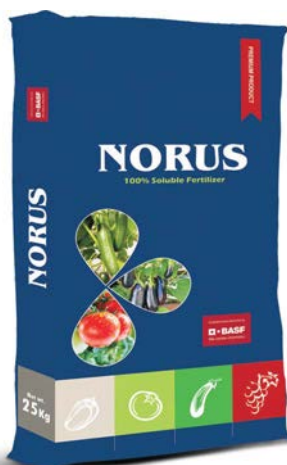
5.37.37+TE

12.0.43+MgO+S

10.52.10+TE

13.5.40

12.45.12+TE



Chelated trace elements by

BASF

We create chemistry





LIBRO®

100% WATER SOLUBLE FERTILIZER

Acidic Fertilizer

Low pH

Libro Brand is considered one of most important NPK brands, with raw materials picked carefully to fit the MENA & GCC soils and environment. The blend is designed To give quick results and assure to the farmer high production and good quality of the final produce.

Libro is available in many formulas to suite all the crops and all the plant growth stages.

Libro contains high standards, pure, Technical grade raw materials.

Libro is based on both Nitrates and Sulphates inputs with balanced ratios to assure good performance on the plant.

Libro inputs assure that it has low PH value to be suitable for use in Saline and high PH soils.

Trace Elements in Libro are of good ratios based on Chelates from BASF Co.

MgO	Fe	Cu	Zn	Mn	Mo	B2O3
500ppm	600ppm	100ppm	200ppm	200ppm	16ppm	100ppm

Formulas:

19.19.19+TE

16.8.24+TE

12.12.38+TE

15.30.15+TE

10.45.10+TE

10.10.43+TE

17.17.17+TE

20.20.20+TE

30.10.10+TE

10.52.10+TE

15.15.30+TE

17.10.27+TE

31.0.5

13.5.40+TE

13.40.13+TE

20.10.20+TE



Chelated trace elements by

BASF

We create chemistry





Farmer is considered the best friend for the farmer due to its famous formulas that suits all crop, and all plant growth stages with affordable prices, and suitability to open fields and indoor crops, it was established years ago, and proved to perform very well in the field with high efficiency in the plant.

Farmer pure technical grade raw materials.

Farmer good percentage of Mg and Sulphates.

Farmer very suitable for Open Field vegetables and Field crops.

Farmer good ratio of Chelated Trace Elements from BASF Company.

MgO	Fe	Cu	Zn	Mn	Mo	B2O3
500ppm	400ppm	75ppm	250ppm	150ppm	20ppm	100ppm

Formulas:

- 20.20.20+TE
- 28.14.14+TE
- 17.10.27+TE
- 10.10.40+TE
- 15.30.15+TE
- 13.5.40+TE
- 10.52.10+TE
- 12.12.36+TE
- 15.15.30+TE
- 20.10.20+TE



Chelated trace elements by
BASF
 We create chemistry





OPTIMAL

100% WATER SOLUBLE FERTILIZER

Soluble NPK Fertilizer

OPTIMAL the highest efficiency in absorbing nutrients by the plant and in the same time quick results.

OPTIMAL manufactured of High Quality, pure, technical grade raw materials.

OPTIMAL Inputs and raw materials are based on Nitrates to assure the highest production and best fruit qualities.

OPTIMAL raw materials guarantees low pH to be freely used in saline and high pH soils and low EC to be freely used in saline and high pH irrigation water.

OPTIMAL free of Chlorine and Sodium.

OPTIMAL contains good ratios of trace elements that are all chelated.

MgO	Fe	Cu	Zn	Mn	Mo	B2O3
500ppm	375ppm	75ppm	250ppm	150ppm	20ppm	100ppm

Formulas:

20-20-20+TE	12-12-36+TE
15-30-15+TE	10-52-10+TE
13-5-40+TE	10-10-40+TE
15-15-30+TE	8-8-36+TE
17-10-27+TE	19-19-19+TE



NOVAQUA

NPK

NOVAQUA is a fertilizer based on the newest technologies to suites all kinds of soils and irrigation water sources and to be suitable for use via both fertigation systems and foliar application.

NOVAQUA very pure raw materials all are technical grade.

NOVAQUA suitable for foliar application and for use in all kinds of irrigation.

NOVAQUA trace elements are all fully chelated.

Fe	Cu	Zn	Mn	Mo	B2O3
400ppm	75ppm	250ppm	150ppm	20ppm	100ppm

Formulas:

18-18-18+2MgO+TE

12-12-36+TE

16-8-24+2MgO+TE

4-4-40+TE

10-50-0+10CaO

20-10-20+2MgO

10-1-40+TE

15-15-30+TE

10-52-10+TE

20-20-20+TE



COBRA

Soluble NPK Fertilizer

100% WATER SOLUBLE FERTILIZER 34-3-3+TE

COBRA is a fertilizer contains a high percentage of nitrogen, which is one of the most important nutrients in plant nutrition, and the plant needs it in large quantities, as it represents the largest amount of the basic organic components in the plant, which include proteins, enzymes, amino acids and chlorophyll.

COBRA is a fertilizer contains a balanced ratio of potassium and phosphorous, which help increase vegetative growth and double production.

COBRA is a fertilizer contains a group of micro-nutrients such as: iron, zinc, copper and manganese in a high-quality chelating form, as well as magnesium, molybdenum and boron. And growth stimulants that help improve fertilizer absorption.

COBRA is a fertilizer recommended to be used in the early stages of planting, flower formation and the beginning of fruit formation.

COBRA is recommended for use with all types of crops such as: open vegetables, greenhouses, fruit trees, palms, field crops (wheat, barley), fodder, landscaping, and ornamental plants.

MgO	Fe	Cu	Zn	Mn	Mo	B2O3
500ppm	600ppm	100ppm	200ppm	150ppm	15ppm	200ppm



PENTAPHOS

5-55-20

PENTAPHOS contains phosphorous in a pure and easy way to plants.

PENTAPHOS is a very pure compound, free of impurities, homogeneous and dissolved in water.

PENTAPHOS very pure raw materials all are technical grade.

PENTAPHOS contains a high percentage of phosphorus, which is important for the growth of the root system and the promotion of flowering and fruits set.

PENTAPHOS contains potassium, which is necessary to increase the size of fruits in various vegetable crops .

PENTAPHOS contains nitrogen in the form of rapidly absorbing ammonium in the proportions necessary for the vegetative growth .

N	P	K
5%	55%	20%



POTASSIUM-N

Rich Acidic Fertilizer with High Quality Potassium

14-1-43

POTASSIUM – N It is based on high purity potassium, free of impurities and chlorine.

POTASSIUM – N It works to provide the plant with the potassium element necessary for cell growth and proper growth of fruits. It is very important in the formation of sugars and starches in fruits and giving them good marketing sizes.

POTASSIUM – N It is distinguished from other potassium fertilizers by its acidic effect and high solubility, making it suitable for all alkaline soils.

pH (1 % solution) 3



STRAIGHT FERTILIZERS

Are always available from the purest sources and formulas around the world, in order to ensure high and distinctive performance in:

Manufacturing to get high quality.

If fertilize with its ; to get highest growth and production to the plants.

BELPHOS – MAP 12-61-0

Mono Ammonium Phosphate, a soluble chemical fertilizer containing a high percentage of Phosphorous.

UREA PHOSPHATE 17-44-0

Urea Phosphate, a chemical fertilizer with high solubility and low pH

MAKFOS – MKP 0-52-34

Mono Potassium Phosphate, a soluble chemical fertilizer containing a high percentage of Phosphorous & Potash.

SULFOPOTASH – SOP 0-0-50+18S

Potassium Sulfate, a soluble chemical fertilizer containing a high percentage of Potash and Sulfur element

MAGNESIUM SULPHATE - MAGNISOL MgO: 16% + S: 13%

16% Magnesium (MgO) + 13% Sulfur, chemical fertilizer in a crystalline form 100% water soluble and strong acidifier.

AMMONIUM SULPHATE – SPAIN ; 21-0-0+24S

21% magnesium (MgO) + 24% sulfur, chemical fertilizer in a crystalline form 100% water soluble and strong acidifier.

AMMONIUM SULPHATE – AMMONISUL 21-0-0+24S

21% Magnesium (MgO) + 24% Sulfur, chemical fertilizer in a crystalline form 100% water soluble and strong acidifier.

AMMONU SAB ; 21-0-0+24S

21% Magnesium (MgO) + 24% Sulfur, chemical fertilizer in a crystalline form 100% water soluble and strong acidifier.

CALBOR – PLUS 16-0-0+2Mgo+26CaO+B₂O₃

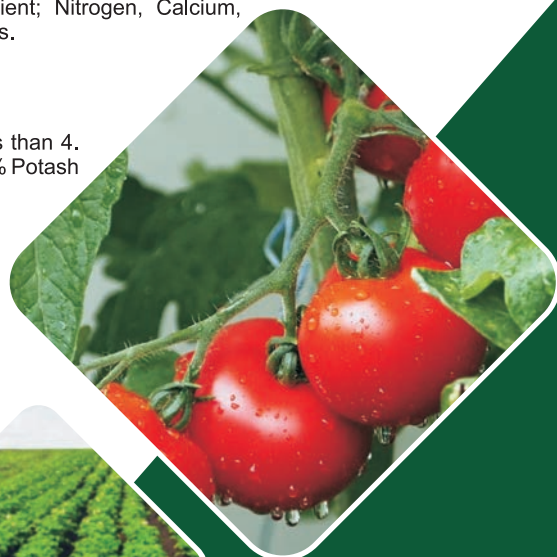
It's a 100% soluble chemical fertilizer that contains an ingredient; Nitrogen, Calcium, Magnesium and Boron, which help the plant absorb Calcium elements.

POTASSIUM NITRATE 13-0-46 ACIDIC

It's a 100% soluble chemical fertilizer, characterized by its pH less than 4. Contains 13% of the Nitrogen element in the form of nitrates and 46% Potash element. As Potash Oxide. Made in Jordan - Kimapco Company.

POTASSIUM NITRATE 13-0-46

It's a 100% soluble chemical fertilizer, containing 13% of the Nitrogen element as Nitrate and 46% Potash element is in the form of Potash Oxide.



FLORABELLES

Calciphite 114

Is a result of extensive research and development work that concentrated on production balanced formula that contains Ca(CaO 3.8%) and Phosphorus(P_2O_5 13%) to help farmers planning nutrition and fertigation.

CropShield 750

Multi-purpose product, applying advanced technology, it is derived from phosphorus acid which forms k-phosphite salt that is rapidly absorbed by a plant, it has a unique "Am-bi-mobile" makes both P, K extremely easily available.

Furthermore, it strengthens plants and enables it to withstand and resist disease factors.

Its distinctive action mechanism makes it: Highly effective resists the phenomenon of flower fall and reduces fruit dropping and as a phosphorous potassium fertilizer for; Flowers and Fruit ripening and for Landscape.

Vantom 360

Liquid soluble mixture of NPK (16-8-8) with high quality chelated trace elements and Humic acid at pH 4.9 - 5.5 makes this super mix an essential tool for yield maximization.

Humi-plus

Liquid soluble mixture of NPK (16-8-8) with high quality chelated trace elements and Humic acid at pH 4.9 - 5.5 makes this super mix an essential tool for yield maximization.

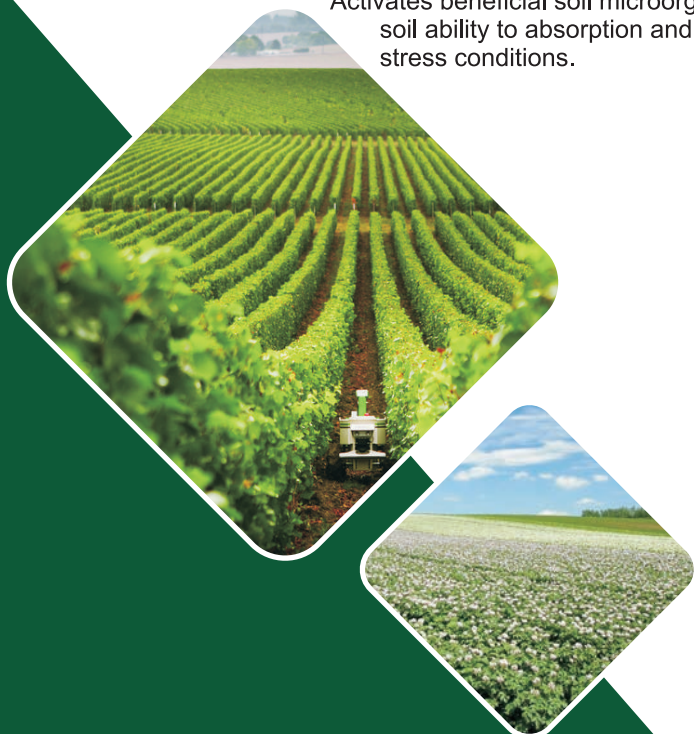
HumiFeed 80%

Water – soluble Humic acid (80%) to improve the plant absorption of fertilizer ions.

Humacare 12%

Concentrate organic liquid containing 12% (w/w) of Humic acid extracted from high quality (Leonardite).

Activates beneficial soil microorganisms. Enhances seeds germination improves soil ability to absorption and water retention. Excellent performance under stress conditions.



Cruiser 12%

Concentrate organic liquid containing 12% (w/w) of Humic acid extracted from high quality (Leonardite).

Activates beneficial soil microorganisms. Enhances seeds germination improves soil ability to absorption and water retention. Excellent performance under stress conditions.

AminoCute

Essential amino acid mixture, total amino acid 30% w/v (free amino acids 24% w/v), used to strengthen plant during frost and hard conditions. Can be applied by foliar spray or through irrigation.

FortiHumic 15

Fertilizer with high value of Humic acid content and fulvic acid derived from natural Leonardite.

Calbit

Foliar liquid fertilizer contains Calcium & Boron both chelated with amino acids to guarantee availability and mobility in the plant.

The complexing, wetting agents and stickers in Calbit enhance the coverage of leaves and allow rapid absorption of nutrients through plant leaves and improve their utilization.

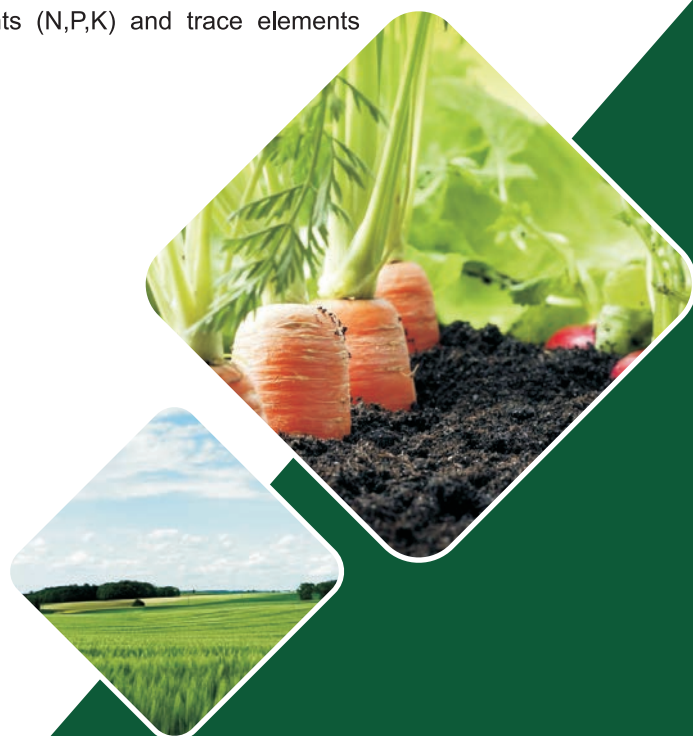
Calbit is supplemented with unique biologically active growth enhancers that increase the growth of roots and plant establishment.

Calbit aids in reducing ethylene formation which minimizes fruit shedding, consequently greater yield and improved fruit quality.

Contains CaO 10% and B 0.3%.

Norus 7-7-7+TE

liquid foliar fertilizer contains macro elements (N,P,K) and trace elements suitable for all plant stages.



Nutrimix 10SL

High quality chelated trace elements mixed with amino acids.

It has a pH of 2.5, which increases the availability of nutrients for absorption by the plant and contains: Magnesium 0.3%, Iron 3%, Zinc 3%, Manganese 2%, Copper 1.2%, and Boron (B₂O₅) 0.8%.

Nitrohumax

A liquid fertilizer contains nitrogen and Humic acid (N: 43%, HUMICACIDE: 4%).

It works to stimulate growth in the plant as well as increase the level of protein within the plant tissues.

FosKor

Pure volcanic phosphoric acid - Unique formula of highly purified phosphoric acid 85%(w/w), free from heavy metals and other impurities.

Distinguished low pH.

Phosphoplus

Pure volcanic phosphoric acid - Unique formula of highly purified phosphoric acid 85%(w/w), free from heavy metals and other impurities.

Distinguished low pH.

Phostimal 5-40-3

Liquid NPK fertilizer for enhancing flowering and root growth at early plant stages.

Humi Retaj

Water soluble fertilizer contains: N 40%, (P₂O₅) 10% , (K₂O) 10% plus Humic acid Plus, Trace elements.

Especially for forages crops (Rhodes grass, Alfalfa, Sorghum).

It provides plant with the essential elements for growth and contains Humic acid, which improve the availability and absorption of the elements in the soil.



Bio-stimulants & Supplements

Rooter 5

Concentrated liquid fertilizer, contains natural elements as ; Abstract of vegetative plant, Seaweed and stimulated materials, Organic acid , Amino acid and Trace Elements.

Activate roots growth that is reflected on fruit setting and yield.

Contains elements that help plants to recover fast from stress ; drought or high temperature stress.

Vegroo 28

Vigro 28 is a cereal specially bio-stimulant and the first of a new generation of products, it promotes tillering, prevent lodging, improve stress tolerance and enhance photosynthesis in wheat crop.

Katalyst

Combines Nitrogen, Boron and Molybdenum in a premium biocatalyst formulation designed for foliar application to provide improved plant stand, increased vigor and higher yield. Katalyst has a stimulating effect upon plants under physiological stress in their early growth stages.

Contains Nitrogen (N) 12% and Boron 12%.



LIQUID & SUSPENSION FERTILIZERS

Calnit Mg

CALNIT Mg: 16-0-0+24CaO+3MgO+TE

100% Soluble suspension fertilizer it is a source of calcium and contains another macro-elements like nitrogen, magnesium and chelated trace elements.

CALNIT Mg Works to treat physiological diseases resulting from calcium deficiency.

Calnit Super

CALNIT Super; 16-0-0+24CaO+TE

CALNIT Super; 100% Soluble suspension fertilizer it is a source of calcium and contains another macro- element like nitrogen, and chelated trace elements.

CALNIT Super; Works to treat physiological diseases resulting from calcium deficiency

Calnit Mg Super

CALNIT Mg SUPER; 16-0-0+24CaO+3MgO+TE

CALNIT Mg SUPER; 100% Soluble suspension fertilizer it is a source of calcium and contains another macro- elements like nitrogen, magnesium and chelated trace elements.

CALNIT Mg SUPER; Works to treat physiological diseases resulting from calcium deficiency

Libro 25-25-18+TE

LIBRO 25-25-18+TE A completely homogeneous suspension fertilizer that works to reduce the pH of the soil solution, which increases the efficiency of nutrient absorption in the two stages:

A- Formation of roots.

B- The cold stress conditions

LIBRO 25-25-18+TE : contains a balanced mixture of trace elements that regulate and absorb nutrients and stimulate the growth of the root and vegetative system.



Libro 12-50-12+TE

LIBRO 12-50-12+TE : Acidic suspension fertilizer enriched by phosphorus element suitable for blooming stage, the presence of adequate quantities of trace elements providing healthy growth of the plant.

Libro 0-52-34+TE

LIBRO 0-52-34+TE: Acidic suspension fertilizer added with irrigation water during the growth, branching and elongation stages of wheat, barley, potatoes and vegetables crops. It contains balanced micro-elements chelated to stimulate all vital processes in the plant.

Libro 15-0-45+TE

LIBRO 15-0-45+TE : Acidic suspension fertilizer enriched by potassium element suitable for production stage, the presence of adequate quantities of trace elements providing healthy growth of the plant.

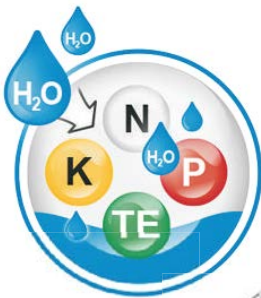
Libro 0-0-60+TE

LIBRO 0-0-60+TE: Suspended fertilizer containing a high percentage of potash to stimulate fruit growth and increase production, especially during the period of low temperatures.

Libro 10-10-10+TE

LIBRO 10-10-10+TE: A liquid fertilizer that contains a balanced ratio of nitrogen, phosphorous and potassium, in addition to it containing a studied and distinct percentage of high-quality chelated micro-elements.

LIBRO 10-10-10+TE: helps to increase vegetative growth and double production and healthy plant growth.



foliar

AGGIS®

100% Water Soluble Fertilizers

Justifications of AGGIS Foliar Fertilizer:

AGGIS FOLIAR: Powder fertilizer chemically manufactured from high purity raw materials.

AGGIS FOLIAR: 100% water soluble fertilizer.

AGGIS FOLIAR: Contains stimulants growth that increase the efficiency of plants to absorb nutrients to suit all cold and hot weather conditions.

AGGIS FOLIAR: Rich in amino acids, naphthalene acid, fulvic acid and sea weeds extract.

Available AGGIS FOLIAR Fertilizer Formulas:

AGGIS 20-20-20+MgO+TE

AGGIS 13-40-13+MgO+TE

AGGIS 12-12-36+MgO+TE

AGGIS 24-10-10+MgO+TE

Fe	Cu	Zn	Mn	Mo	B	Co
1000ppm	200ppm	100ppm	1000ppm	50ppm	600ppm	20ppm

Chelated trace elements by

BASF
We create chemistry



NORUS LEAF®

Justifications of **Norus Leaf** Fertilizer:

NORUS LEAF: A foliar fertilizer that contains high quality of macro elements and chelated micronutrients elements , all of them are in measured quantities and formulations that suit the different stages of plant growth.

NORUS LEAF: 100% soluble fertilizer.

NORUS LEAF: It contains stimulants for growth, which in turn help to improve absorption of the elements.

NORUS LEAF: Free of chlorine and sodium.

NORUS LEAF: Used for all kinds of crops in addition to flowers, ornamental plants and landscapes.

Available **Norus Leaf** Fertilizer Formulas:

NORUS LEAF 18-18-18 +1MgO+TE

NORUS LEAF 12-48-12 +1MgO+TE

NORUS LEAF 10-10-40 +1MgO+TE

Chelated trace elements by

BASF

We create chemistry



Librel

CHELATED TRACE ELEMENTS SINGLE & MIX

EDDHA : Ethylenediamine-N,N'-bis(2-hydroxyphenylacetic acid).
EDTA: Ethylenediaminetetraacetic acid.
DTPA: Pentetic acid or diethylenetriaminepentaacetic acid

EC Fertilizer:

Librel: Is a trademark of the German company BASF.

Librel: All Librel micronutrients are manufactured using high-performance BASF Trilon® chelating agents.

Librel: Denotes chelated nutrients in the form of micronutrients EDTA, EDDHA and DTPA.

Low pH, fully water soluble used in plant fertilization processes through foliar apply or the addition of soil or in hydroponics applications.

Librel: Safe on crops since Librel Chelate is not caustic or scorching to the plant, there is minimal risk of Leaves burns, or root damage are often associated with inorganic formulations.

Applications:

Agricultural crops.	Ornamental plants and green areas.
Vegetables.	Hydroponic systems.
Fruit trees.	Fertilizer formulations.



Librel AVAILABLE as SINGLE ITEMS

Librel Fe-Lo

EDTA containing 13.2% iron.

Librel FeHi

EDDHA / EDTA chelate, containing 7% iron.

Libfer SP 6% FE

EDDHA Chelate (6% Fe to 4% Ortho-Ortho EDDHA).

CHAUFER 6% FE

EDDHA Chelate (6% Fe to 4.8% Ortho-Ortho EDDHA).

Librel Mn 13%

EDTA.

Librel Cu 14%

EDTA.

Librel Zn 14%

EDTA.

Librel Ca 9.5%

EDTA

Librel AVAILABLE as MIXTURE ITEMS

Librel MIX

EDTA chelate mixture containing; 0.30% Cu, 7.50% Fe, 4.00% Mn, 0.5% Zn, and inorganic salts of B-(sodium borate) (0.5%), Mo - sodium molybdate (0.2%).

Librel BMX

EDTA chelate mixture containing; 1.70% Cu, 3.35% Fe, 1.70% Mn, 0.60% Zn, and inorganic salts of B-(sodium borate) (0.875%), Mo - sodium molybdate (0.023%).

Librel RMX 26

EDTA chelate mixture containing; 1.50% Cu, 4.00% Fe, 4.00% Mn, 1.50% Zn and inorganic salts of B - sodium borate (0.50%), Mg (2.00%), Mo - sodium molybdate (0.10%).

Librel TMX AP02

EDTA chelate mixture containing; 1.40% Cu, 3.27% Fe, 1.29% Mn, 5.00% Zn and inorganic salts of B - sodium borate (1.28%), Mo - sodium molybdate (0.11%).





Salt Free

HIGHT QUALITY

The ingredients: Total Nitrogen: 15% and Sulfur (So₃): 41%.

Salt free Justification:

Actively combats hard water intensity and actively supports the establishment of a strong plant.

Makes the nutrients in the soil more absorbable.

Makes the plant more effective in conditions of high salinity.

Is less dangerous than nitric acid and phosphoric acid (acid only when in contact with water).

Neutralizing Action:

Neutralizes the acidity of irrigation water and base solutions, by neutralizing carbonate and bicarbonate in irrigation water.

Works to treat soil salinity by releasing sodium and making it washable.

Prevents the formation of salt layers and preserves the texture of the soil, thus increasing soil resistance under saline high conditions.

Increases the availability of nutrients in the soil for absorption.

Leads to a homogeneous flow of irrigation water and cleans drip irrigation systems.

Nutritional effect: Balanced nitrogen nutrition.

Works on a nitrogen balance in the forms of NO₃, NH₄, nitrites and ammonia,

which leads to the provision of nitrogen for longer periods of time, increase the solubility of phosphorous and other elements in the soil solution and absorb them into plant cells.

Bio Stimulant Action:

It works to Stimulating and energizing the roots from the cytokinin, which activates cell division in the root zone, which enables access to a more vital root system and thus gives better growth.





LIBRO[®]

CLEAR S

Liquid Fertilizer & Soil Salinity corrector

Libro clear S: for treatment of soil and water salinity.

Libro clear S: for treatment calcium shortage.

Libro clear S: is a growth activator help for roots formation and its growth.

Libro clear S: helps for increasing the useful micro organisms in soil.

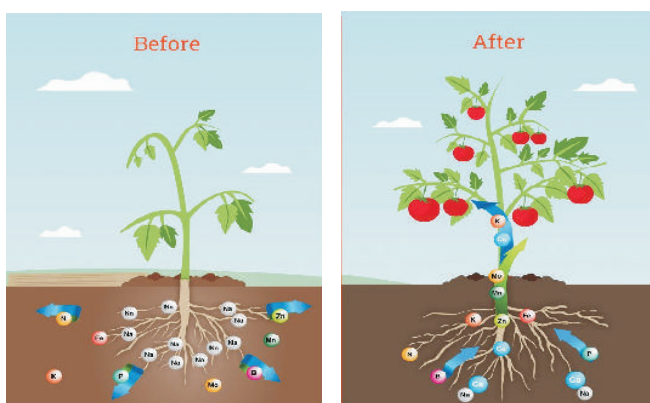
Application rate:

Green landscapes: 2 - 4 Liter/Acre (every 1 - 2 month).

Vegetables: 1.2 - 3.2 liter/Acre (every two weeks).

Green houses: 2 - 3.2 liter/Acre (every two weeks).

Arboretum: 50 -100 ml/100 liter spray water.



PESTICIDES



Acetaplan 200SL / 350SC

Potegon 20SP

Acetamiprid

Systemic neonicotinoid insecticide; designed to control sucking insect pests such as whitefly, aphids, mealy bugs and others in Greenhouses and open field crops including tomato, peppers, cucurbits, grapes and citrus.

Rate of uses: Please check the label or the Agronomist.

Alphacide 50EC / 100EC

Shaolin 100EC

Alpha-Cypermethrin

Mode of action: Non-systemic pyrethroid insecticide with contact and stomach action. Acts on the central and peripheral nervous system in very low doses.

Targeted Pests control: particularly Lepidoptera, Coleoptera and Hemiptera Aphids, Caterpillars, Whitefly, Thrips. Fruit worms and Red Palm weevil.

Uses: for control of a wide range of chewing and sucking insects particularly in fruit trees, vegetables, cereals, vines, maize, beet, potatoes, cotton, soybeans, forestry & other crops.

Rate of use: Please check the label or the Agronomist.

Alfox 57%

Quickphos 57%



Aluminum Phosphide

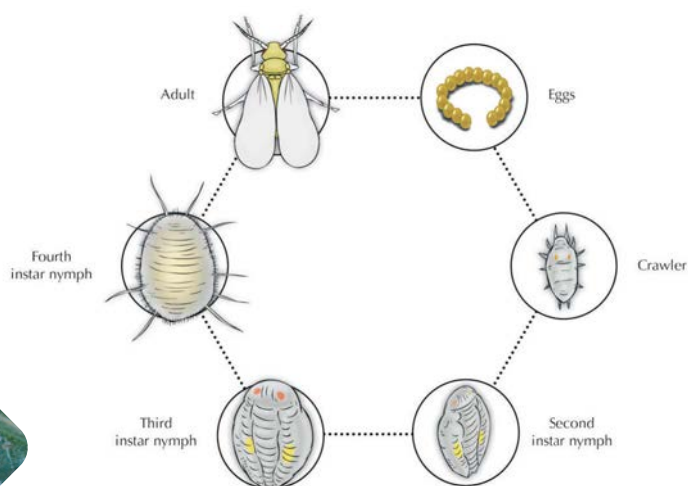
Aluminum phosphide: It is an invasive insecticide and is considered a rodenticide.

It consists of aluminum phosphide and ammonium carbamate in addition to paraffin as a carrier and is used for fumigation of grain, warehouses, silos and others to protect them from insect pests.

It is used to control warehouse insects: such as weevils and beetles. And rodents such as: rats and mice.

It is highly toxic to mammals, birds, fish, honeybees, algae and earthworms.

Rate of uses: Please check the label or the Agronomist.



Azdar 15EC



Azadirachtin A 1.5%

Biological / Organic insecticide and acaricide properties with higher powerful concentration of the active ingredient "Azadirachtin A " ; with a multiple mechanism of action to contribute to breaking the immune phase of Insects, as it is included in the integrated pest management (IPM) and organic cultures.

Targeted pests: whiteflies ,leaf miners including tomato leaf miner (*Tuta absoluta*),pear psylla, aphids, worms, thrips, leaf hoppers.

Rate of uses: Please check the label or the Agronomist.

Talstar 100EC



Bifenthrin 10%

Non-systemic insecticide / acaricide(Pyrethroid) with unique stable chemical structure.

Mode of action: Non-systemic with contact and stomach action, binds to sodium channels, prolonging their opening and thereby causing insects death. It also has an acaricidal activity.

Targeted Pests: Effective against a broad range of foliar pests, including Coleoptera, Diptera, Heteroptera, Homoptera, Lepidoptera and Orthoptera; it also controls some species of Acarina on vegetables, cereals, citrus, cotton, fruit trees, grapes and ornamentals.

Produced under license from FMC.

Rate of uses: Please check the label or the Agronomist.

Brigader 200SC



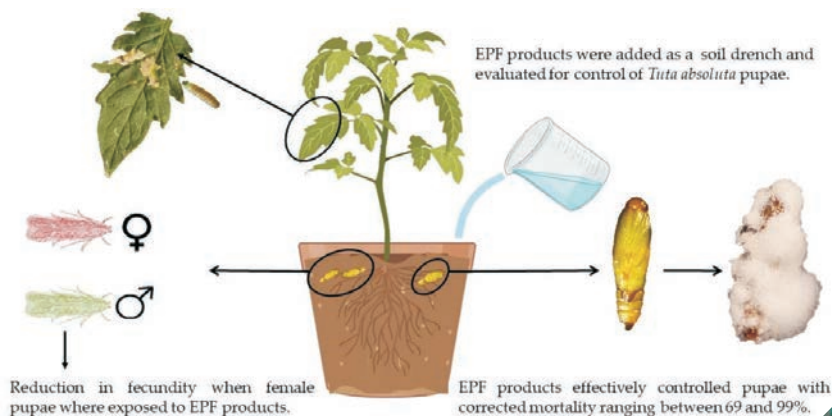
Bifenthrin 10%+ Imidacloprid10%

An insecticide characterized by its high effectiveness against a wide range of insects and spiders on many agricultural crops .

It affects systemically as well as contact and through stomach action , and it is effective in a strong stun and long-term; Due to the distinction and stability of the chemical composition of the active substances. Product licensed from FMC International.

Targeted pests: control of chewing and sucking insects, including whitefly, aphids, thrips and spiders.

Rate of uses: Please check the label or the Agronomist.



Hanaro 100EC

Bistrifluron 10%

A modern insect growth regulator, the result of research and developed with major international companies.

It depends on it to control the immature phases of many stubborn insects such as: whitefly, butterfly larvae, leafworms and others.

It can be mixed with a group of other pesticides for effective and long-term effect.

Rate of uses: Please check the label or the Agronomist.

AcetoBist 200SC

Bistrifluron 10% + Acetamiprid 10%

An insecticide containing two substances:

Acetamepride, which works to control perforating sucking insects: whitefly, aphids, mealy bugs and scale insects.

Bistrifluron, Chitin synthesis inhibitor, benzoylurea insect growth regulator that is used to control: whitefly, butterflies, leafworms, and others.

It affects the reproductive system of the insect by producing sterile eggs and affects the erosion of the outer wall of the eggs.

Rate of uses: Please check the label or the Agronomist.

Cyprine / Cyprodin 100EC

Cyprone 250EC

Ningbo 250EC



Cypermethrin

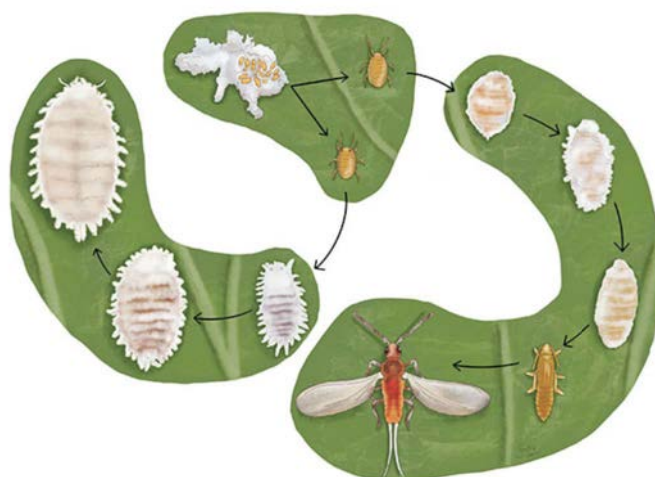
Non-systemic insecticide with contact and stomach action. Also exhibits anti-feeding action.

For control of a wide range of insects, especially Lepidoptera, Coleoptera, Diptera, Hemiptera classes. Good residual activity on treated plants.

Targeted pests: to control aphids, worms, whiteflies, and potato tuber moths (adults).

Target crops: all kinds of vegetables, field crops, forages, fruit trees, ornamental plants & landscapes.

Rate of uses: Please check the label or the Agronomist.



Novasat 75WG



Cyromazine 75%

Insect Growth Regulator Insecticide to Control Diptera and Some to Triazine Group:

Mode of action: insect growth regulator for controlling leaf miners and some worms in a wide range of crops; with contact and stomach action.

Flexible application options spraying or soil treatment.

Less harmful to beneficial, so it is perfect for IPM programs

Translaminar action to get inside leaves within 2 hours after application which ensures perfect control even in rainy season.

Superior leaf miner control with low use rates reduced leaf-miner egg laying and hatching produces malformed pupae interferes with molting process leading to morphological in leaf miners

Rate of uses: Please check the label or the Agronomist.

Deciban 25EC

Deciban 100EC

Deltamethrin

Non-systemic, potent, fast-acting insecticide with contact and stomach action.

Targeted pests: Effective against a wide range of pests. Crop protection uses include Lepidoptera, Coleoptera, Diptera, Hemiptera classes to control aphids, worms, whiteflies, and potato tuber moths (adults).

Target crops: all kinds of vegetables, field crops, forages, fruit trees, ornamental plants and landscapes.

Rate of uses: Please check the label or the Agronomist.



Deciban 12.5ULV**Deltamethrin 1.25%**

Non-systemic, potent, fast-acting insecticide with contact and stomach action use throw ULV machine.

Uses: Effective against a wide range of pests. Crop protection uses include Lepidoptera, Coleoptera, Diptera, Hemiptera classes..

Targeted pests: to control aphids, worms, whiteflies, and potato tuber moths (adults).

Target crops: all kinds of vegetables, field crops, forages, fruit trees, ornamental plants and landscapes.

Rate of uses: Please check the label or the Agronomist.

Sniper 75EC**Emamectin Benzoate 2.5% +Lambda-Cyhalothrin 5%**

A non-systemic insecticide distinguished by its ability to penetrate plant tissues.

It contains two ingredients active that eliminate many worms; such as leafworm larvae.

Targeted pests: Aphids, Beetles, Thrips, Lepidoptera larvae, Coleoptera larvae & adults, Lepidoptera larvae "Spodoptera litoralis , Spodoptera exigwa, Heliothis spp., Agrotis spp.

Rate of uses: Please check the label or the Agronomist.

ThripGuard 50SC**ThripNil 200SC****Fipronil 20%**

New insecticide with moderately systemic action. It is a contact product with wide spectrum activity.

Control all sucking insects such as: Aphid, Jasid (hoppers), Mealy bugs, Scale insects.

High efficiency to control: Red palm weevil, Dobbas Palm, Dubas Bug, Insect Dubas, Long horned palm stem borer beetle, Digger palm fronds, Palm pollen weevil or palm flower weevil, The small date worm (Humira), and The large date moth.

Rate of uses: Please check the label or the Agronomist.



ProAct 50EC

Robust 50EC

Emamectin Benzoate

Non-systemic potent insecticide(Avermectin) which penetrates leaf tissues by translaminar movement. Acts by stimulating the release of g-aminobutyric acid, an inhibitory neurotransmitter, thus causing paralysis.

Target Pests: Lepidoptera larvae "Spodoptera litoralis, Spodoptera exigwa, Heliothis spp., Agrotis spp.

Rate of uses: Please check the label or the Agronomist.

Sender 50EC

Esfenvalerate 5%

Pyrethroid insecticide with contact and stomach action, with a very broad range of activity. Working on vegetables and fruit trees.

Target Pests: Coleoptera, Diptera, Hemiptera, Lepidoptera and Orthoptera insects.

Rate of uses: Please check the label or the Agronomist.

Fendure 500EC / 500 ULV

Fenitrothion 50%

An organic phosphorous insecticide that works by contact and stomach action.

Target pests: Aphids, worms, whitefly, leaf hoppers, beetles, borers and more.

Target crops: It has a wide range of effectiveness on many agricultural crops, whether vegetables or fruit trees.

It is available as an emulsifiable concentrated liquid and in ULV form.

Rate of uses: Please check the label or the Agronomist.



MEGAPRIDE 2GR**Imidacloprid 2%**

A systemic insecticide, which has an effect through contact and stomach.

Through the active ingredient imidacloprid, it controls against many soil insects, such as: Beetles , including the Date Palm Borer, Mole Cricket, Wire worms and others, as well as the sucking insects including Aphids.

Use only as spreading on soil.

Targeted insects: All soil insects as Beetles, Date Palm Borer, Mole Cricket, Wire worms and aphids.

Rate of uses: Please check the label or the Agronomist.

Yimacho 350SC**Imidor 350SC****Imidor 200SL****Imidacloprid**

A systemic insecticide that follows a unique chemical group in terms of its mechanism of action and properties. It protects against the transmission of plant viruses by eliminating the vector pests.

Used as a seed dressing, soil or foliar treatment in different crops, e.g. vegetables, cereals, potatoes, cotton, maize, sugar beet, citrus fruit, pome fruit and stone fruit.

Targeted pests: Control of sucking insects, including leaf - and planthoppers, whitefly, aphids, thrips, Mealybugs and Scale insects. Also effective against soil insects, termites and some species of biting insects, such as weevils and beetles.

Rate of uses: Please check the label or the Agronomist.

Extrapride 70WG**Imidacloprid 70%**

A systemic insecticide, which has an effect through contact and stomach.

Targeted insects: All soil insects as Beetles, Date Palm Borer, Mole Cricket, Wire worms and aphids.

Rate of uses: Please check the label or the Agronomist.



V-plan 222 SC

Indoxacarb 14.5% + Acetamiprid 7.7%

It is an insecticide that contains two active ingredients, which makes it a control feature through the systemic effect, contact and stomach action. Through this combination of these two ingredients actives, the distinctive and strong effect on all ages of the insect is from egg, larva and whole insect. Target pests: sucking chewing insects such as whitefly, aphids, mealybugs, and scale insects & worm. Target crops: open field vegetable crops, greenhouses, grapes, citrus, and others.

Vaulent 150EC

Vaulent 150SC

Indoxacarb

Insecticide Act by contact and stomach action. Affected insects cease feeding, with poor co-ordination, paralysis and ultimately death by blocking sodium channels in nerve cells.

Targeted pests: Used for broad-spectrum control of Lepidoptera.

Targeted crops: vegetables, crops and fruits.

Rate of uses: Please check the label or the Agronomist.

Lamdoc 50EC

Lambda-Cyhalothrin 5%

Non-systemic Insecticide with rapid knockdown effect and long residual activity. Provides good control of insect-borne plant viruses.

Uses: Control of a wide spectrum of insect pests in cereals, ornamentals, potatoes, vegetables & other crops.

Targeted pests: Aphids, Beetles, Thrips, Lepidoptera larvae, Coleoptera larvae & adults.

Rate of uses: Please check the label or the Agronomist.



FLURON 50EC

Lufenuron 5%

An insecticide in the form of a emulsifying concentrated that is used as a spray on the shoots system(vegetative parts).

A selective insecticide that works through contact and stomach to accelerate the molting process for target insects.

It is sprayed when the insect is first detected and before the insect reaches the critical economic limit. And before the egg hatching stage, to ensure that the emerging larva are exposed to the treated surfaces before any damage to the crop occurs.

Rate of uses: Please check the label or the Agronomist.

Bon-Oil 965EC



Paraffin Oil 96.5%

Acaricide, insecticide, and herbicide, adjuvant.

Bon-Oil is used for control of overwintering pests' forms; (particularly winter pests' eggs) on fruit trees, vines, Palm trees and some ornamentals.

Mode of action: Acaricide and insecticide with ovicidal activity.

Targeted pests: Spider mites, scale insects and overwintering or summer eggs of insects and mites.

Rate of uses: Please check the label or the Agronomist.



Astroze 240SC



Methoxyfenozide 24%

An insecticide in the form of a suspension concentrated that is used as a spray on the shoots system (vegetative parts).

Belongs to the chemical group Diacylhydrazine Group 18.

Kills Lepidoptera insect larva only.

Lepidoptera order (Squamata wings or cortical wing): It is the second largest order of insects with wings. Scaly, among them are butterflies and moths.

A selective insecticide that works through contact and stomach to accelerate the molting process for target insects.

It is sprayed when the insect is first detected and before the insect reaches the critical economic limit. And before the egg hatching stage, to ensure that the emerging larva are exposed to the treated surfaces before any damage to the crop occurs.

Mechanism of action divided into:

A pesticide that speeds up the molting process of the larva after ingestion and then kills the larva by affecting the hormone hydroxy-dyson-20, this hormone is important for the larva during the molting process in the two stages (L1-L2) and thus the larva dies before the completion of the life cycle.

This mechanism of action differs from the effect mechanism of other insect growth regulator in terms of affecting the insect's chitin or through substances with a hormonal effect.

Affects by ingesting newly hatched larva. It has a negative effect on the ovary.

After the larva have ingested ASTROZE 240SC; They stop feeding within 4-8 hours, and subsequently the larva dies due to their inability to feed and their ability to complete the molting process.

Suitable for integrated pest management programs (IPM).

Should be sprayed thoroughly, covering all shoots, to ensure the eradication of the larvae.

Stable in spray solution at pH 4 - 9.

Rate of uses: Please check the label or the Agronomist.

Drago Combi Plus 470EC

Pirimiphos methyl 42% + Cypermethrin 5%

A non-systemic insecticide that works by contact, stomach and by the action of fumes.

It is used to control beetles in addition to warehouse insects.

Rate of uses: Please check the label or the Agronomist.



Vim 240SC**Spirotetramat 24%**

Pesticide justification: Insecticide that control mainly by ingestion and by contact. It affects the egg and larval stage of the insect, with additional effects on the fertility of adult insects. Target pests: Aphids, whitefly, diamond back moth, mealybugs, scale insects and thrips. It is used on a wide range of vegetable crops, onions, potatoes, and various fruit trees such as grapes, citrus, apples, and almonds. It is preferable to add Adjuvant in the spray tank to increase the efficiency of the pesticide. It is characterized by a short safety period(PHI), as it reaches one day on some vegetable crops.

Rate of uses: Please check the label or the Agronomist.

Daspino 480SC**Spinosad 48% (w/v)**

An insecticide that acts by contact and stomach affect , has penetrative property and paralyzes the insect. Selective insecticide used to control some insects in vegetable crops and fruit trees, such as: thrips, insect larvae and cabbage root fly.

A highly effective insecticide against a wide range of insect orders as:

Thysanoptera order, such as: Thrips.

Lepidoptera order, such as: Butterflies and moths.

Diptera (two-winged) order, such as: Fruit flies and leaf miner.

Coleoptera order, such as: Colorado beetle.

Mode of action:

Affects a unique site of the insect's nerve receptors and symptoms appear immediately almost complete deaths occur within a few hours.

Enters the insect mainly through contact and stomach occurs by direct.

It occurs by:

Direct application; spray the insect.

Through the stomach by feeding to leaves treated with Daspino 480SC .

Suitable for integrated pest management program(IPM).

Rate of uses: Please check the label or the Agronomist.



Maxom 240SC

Thiamethoxam 24% (w/v)

A systemic insecticide belonging to the Neonicotinoid group.

A systemic Insecticides that has a wide contact and stomach action. Use as a foliar or soil spray. Very effective against the following insects: Sucking insects such as: whitefly, thrips, mealybugs, and aphids.

Larvae of chewing insects such as: beetles, trees borer, cutworms, leaf miner , and hoppers.

Certain and distinct efficacy in controlling insect strains that have acquired resistance against other chemical groups. As: It works in a new and unique way of effect, as it stops the chemical nerve communication between endings Nerve cells within the nervous system are at sites that other insecticidal compounds do not act upon from different chemical groups. It acts as a stimulant for the acetylcholine receptors on target insects, thus causing injury to the nervous system and leads to paralysis of the insect and its inability to feed, walk and fly. Thus, the insect dies.

Affects all stages of insect larva, pupa the transition phase from larva to adult insect, nymph and adult except for the egg phase. It is rapidly absorbed from all parts of the plant, including: seeds cotyledons, buds, newly grown leaves and pollen grains and is characterized by its rapid transfer in xylem and phloem the vascular tissue in plants.

Systemically effective when added to soil with irrigation water to control all the above- mentioned insects.

Produce a crop free from viral diseases and obtain strong and perfect vegetative growth with high yield and high quality. It has a long effect after treatment and has low application rates compared to other pesticides.

Rate of uses: Please check the label or the Agronomist.



Azostar 325SC

Azoxystrobin 20%+Difenoconazole 12.5%

A fungicide in the form of a suspension concentrate that is transmitted systemically as well as penetrates the paper tissues.

It has preventive, curative and eradivative properties.

Targeted Disease: It eliminates a wide range of fungal diseases such as: powdery mildew, downy mildew, rust, early blight, late blight, leaf spot, brown spots that affects vegetables, field crops and fruit trees.

Targeted crops: vegetables, fruit trees, potatoes, citrus, crops, palm trees and ornamental plants.

Rate of uses: Please check the label or the Agronomist.

Lacerta 250SC



Azox 250SC

Azoxystrobin

A preventive and curative systemic fungicide.

It contains active ingredient Azoxystrobin.

Targeted crops: It has excellent activity against a wide range of fungi that infect vegetables, cucurbits, spikes of cereal crops and others.

Targeted Disease: -such as Rust Diseases, Powdery mildew, Septoria, Deuteromycotina (Alternaria) and Helminthosporium.

Rate of uses: Please check the label or the Agronomist.

Coprex 85% WP

Copper oxychloride 85%

A copper fungicide in the form of; a wettable powder.

A pesticide containing oxychlorid copper 85% w/w.

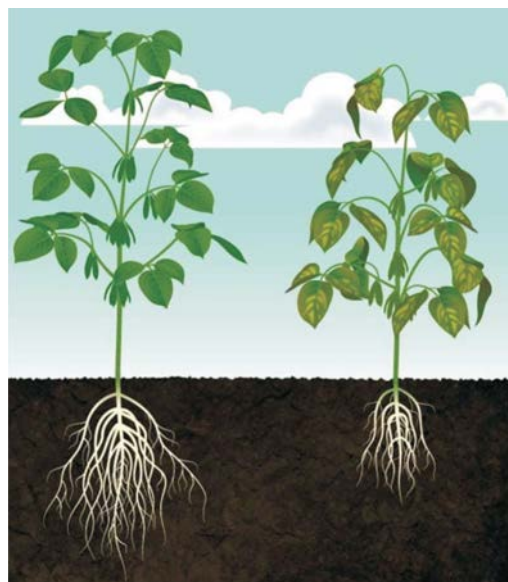
A pesticide that works by contact ;and is used as a preventive pesticide by spraying it on the crop before the appearance of the disease and curative by spraying it after notice disease symptoms.

Targeted crops: vegetables, fruit trees, potatoes, citrus, crops, palm trees and ornamental plants.

Some apple varieties are sensitive to this pesticide.

Targeted diseases: Gummy stem blight, leaves rot, white mold, back rot, gray mold (botrytis) ,powdery mildew, downy mildew, scab, stem blight, leaf spots, bacterial rusts, Alternaria, botrytis, phytophthora.

Rate of uses: Please check the label or the Agronomist.



Divizole 250EC

Antalia 250EC



Difenoconazole

A broad-spectrum preventive and curative systemic fungicide that provides extended protection for the plant, has the ability to stop the disease in all its stages with high efficiency, it interferes with the formation of the fungus cell walls and works to stop its growth and reproduction and thus prevent the spread of the disease.

It is quickly absorbed into all parts of the plant after spraying, which ensures comprehensive protection even when rain falls.

A single treatment of Divizole protects the crop against many diseases, which saves costs.

It is characterized by having no effect as colored spots on the fruits after spraying and thus preserves the marketing value of them.

Targeted crops: vegetables, crops of all kinds, fruit trees, citrus, wheat, barley and ornamental plants.

Targeted diseases: Early blight, Powdery mildew, Septoria, Leaf spot, Anthracnose, Stem blight, Septoria blotch, Alternaria blight.

Rate of uses: Please check the label or the Agronomist.

Morfos 50WDG

Flumorph 5% + Fosetyl Aluminium 45%

Fungicide; with protective and curative action have two ingredients active. For control a broad spectrum of vegetative fungi and soil disease, and bacterial diseases.

Targeted crops: Vegetable Crops, Potato, Lettuce, Strawberry, Tomato, cucumber, Ornamental, Fruit Trees, especially, Grape.

Targeted disease : Late blight ,downy mildew, Wilting caused by Pythium , Bacterial leaf spots.

Rate of uses: Please check the label or the Agronomist.

Alaska 400SC

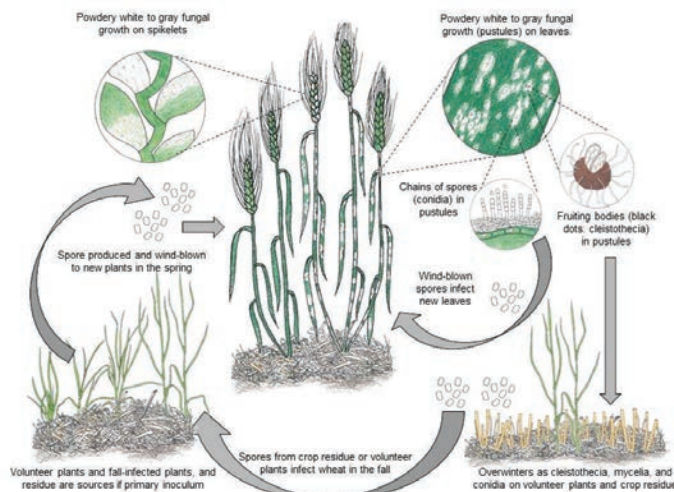
Pyrimethanil 40%

Fungicide; with protective and curative action For control Gray mold of vegetables and Grape vine.

Targeted crops: Vegetable Crops, Ornamental, Fruit Trees, especially ,Grape and Strawberry.

Rate of uses: Please check the label or the Agronomist.

Powdery Mildew Disease Cycle



Stin 80WP

Fosetyl-Aluminium 80%

Fungicide; with Systemic, preventive and curative.

This fungicide; depends on a new mechanism of action by control the fungi inside the plant by moving it up and down, which helps to resist the fungi through the stem and roots.

Targeted crops: for control of fungi that attack field crops, vegetables, grapes and turf.

Targeted disease: Phytophthora and Pythium root and crown rots, Pseudomonas apple blister spot, Alternaria.

Rate of uses: Please check the label or the Agronomist.

Terrazol 300SL

Hymexazol 30%

A systemic, curative and preventive fungicide to control soil fungi such as Fusarium, Rhizoctonia that cause seedlings wilting and root rot.

It has a strong stimulating effect for the plant, it increases the growth of the root capillaries, which increases the activity of the roots and works to the plant's tolerance to low temperatures.

Target crops: crops, vegetables, fruit trees, cucurbita and ornamental plants.

Rate of uses: Please check the label or the Agronomist.

Ridoxyl 240EC / 480EC

Metalaxyl M 24% / 48%

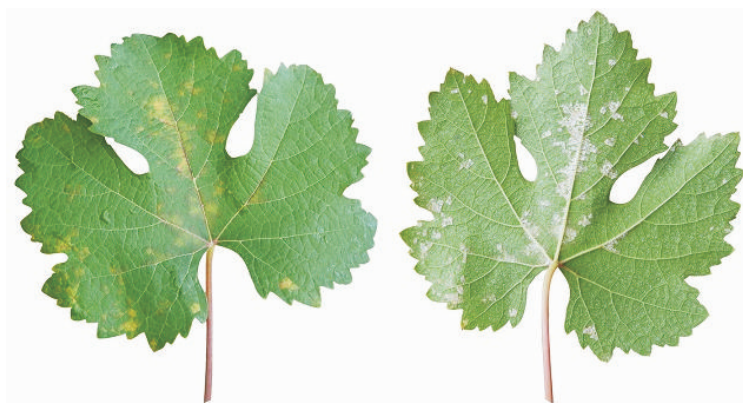
A systemic fungicide in the form of Emulsifiable Concentrate.

A preventive and curative fungicide for treating soil fungi, that cause stem and root rot through watering the root system; such as Pythium and Phytophthora.

Mechanism of action: It is absorbed by the roots and transferred to the top through the transport vessels to all plant tissues to provide protection for all parts of the plant.

Note ; Spray on leaves are used if mixed with other fungicides to control aerobic fungi such as downy mildew and late blight.

Rate of uses: Please check the label or the Agronomist.



Butanil 125EC / 250EC

Myclobutanil 12.5% / 25%

A systemic fungicide in the form of Emulsifiable Concentrate.

It is used to control :Ascomycetes fungi, Basidiomycetes fungi and imperfect fungi.

A fungicide that has preventive and curative properties to control: powdery mildew, rusts, scab, leaf punctures, soil fungi, brown spots, black spots, red discoloration of the grass, and dead spots in the grass (dollar stains).

Target crops: grapes and apples, vegetables, crops, grains, ornamental plants and landscapes.

Rate of uses: Please check the label or the Agronomist.

Funraz 400EC

Prochloraz 40%

Broad spectrum contact fungicide; with translaminar action.

Capable of controlling a wide range of fungal diseases of economic importance in extensive crops and cereals plus diseases affecting fruits, vegetables and turf.

Targeted disease: Eye spot, Anthracnose, Alternaria, leaf blight, Scab, Black rot ,Powdery mildew, Yellow Leaf,(Helminthosporium spp),Black Mould, Softy Mould, Glume Bloch, Leaf Spot, Leaf Blotch, Net Blotch, Spot blotch, Botrytis, Cladosporium, Stemphylium, Fusarium spp.

Note: Prochloraz 40% used against storage or transit diseases of when applied as a drip treatment after harvest.

Rate of uses: Please check the label or the Agronomist.

TilZole 250EC

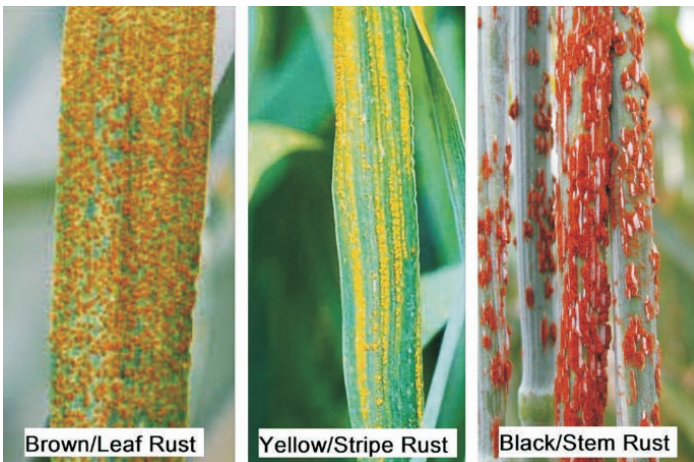
Propiconazole 25%

Systemic fungicide with protective and curative action.

Targeted diseases: working on many fungus diseases such as Rusts, Leaf spots, Powdery mildew, Yellow rusts, Steam rust, Powdery rot, Eye spot and controlling also Fusarium, Rhizoctonia and Sclerotinia diseases.

Targeted crops: Wheat ,Barely, Stone Fruits and Vegetables crops.

Rate of uses: Please check the label or the Agronomist.



Procure 722SL**Propamocarb HCl 722**

A systemic, curative and preventive fungicide in the form of Soluble liquid.

A fungicide that provides a distinctive control of Oomycetes fungicides that have acquired resistance to pesticides, as it interrupts the biochemical synthesis of fatty acids in the fungal cells which stops its growth.

A pesticide that can be applied to plants through root irrigation and foliar spray.

Targeted diseases: for treatment of damping off, downy mildew, Pythium, late blight and root rot caused by Phytophthora.

Target crops: citrus, fruit trees, vegetables, greenhouses and nurseries, and ornamental plants.

Rate of uses: Please check the label or the Agronomist.

Sulfin 800 SC**Sulfolac 80 WG****Saupolo 80 WG****Sulfur**

Acaricide/ fungicide; works in contact.

It is characterized by the small size of particles for sulfur, the speed of dissolution and the ease of penetration into plant cells.

Targeted crops: used to spray on leaves ;as cereal crops, vegetables, grapes, deciduous trees fruit, ornamental plants and palm trees.

Control spiders, scab, powdery mildew, brown rot, and leaf spot.

Rate of uses: Please check the label or the Agronomist.

Topax**Penconazole 10%**

Systemic fungicide have a vapor action, has the ability to move Acropetally in the plant.

Provide protective and curative against Powdery Mildew, Rusts and Scap on Cucurbits, Grape, pome & Stone trees, and Ornamentals.

Rate of uses: Please check the label or the Agronomist.



Talent 250EC

Tebuconazole 25%

A systemic fungicide with a preventive and curative effect.

It is highly effective against a wide range of fungi that infect leaves and spikes.

It can be used at seed germination to protect it from soil fungi.

Targeted crops: cereals, grapes, vegetables, stone trees.

Targeted Diseases: It works very efficiently on Rust, Powdery mildew, septic spot, scab, monilia, stem rot, early blight, leaf blotch, net blotch, seed rot caused by Fusarium and various types of Smuts, including loose, covered and others.

Rate of uses: Please check the label or the Agronomist.

Trinol 250EC

Triadimenol 25%

A systemic preventive and curative fungicide

It is absorbed by roots and leaves and transported in plant tissues.

Targeted diseases: eradicate powdery mildew, echoes, and scabies.

Target crops: Vegetables, Fruits, Palm trees, Cereals and other agricultural crops.

Rate of uses: Please check the label or the Agronomist.

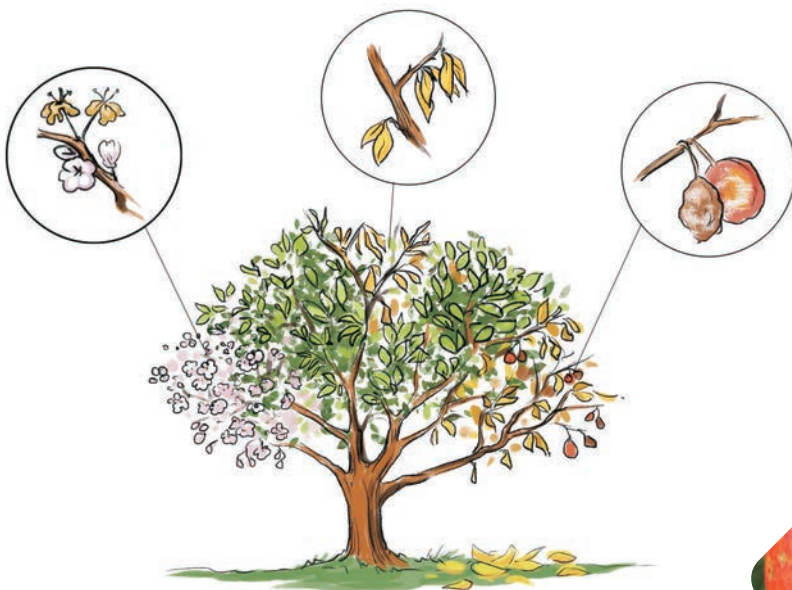
Azostop 446SC

Azoxystrobin 32.2% + Mitalaxyl-M 12.4%

A systemic, curative and preventive fungicide to control soil fungi such as Fusarium, Rhizoctonia, Bithium and phytophthora that cause seedlings wilting and root rot.

Target crops: crops, vegetables, fruit trees, cucurbita and ornamental plants.

Rate of uses: Please check the label or the Agronomist.



TransAct 18EC

Abameck 18EC

Abameck 36EC

Alopec 18EC



Abamectin

Acaricide / insecticide; belongs to unique chemical group extracted from microorganisms. Compatible with Integrated Crop Management (IPM) programs.

Mode of action: Contact and Stomach activity by stimulating the release of aminobutyric acid, an inhibitory neurotransmitter, thus causing paralysis. Has limited plant systemic activity but exhibits translaminar movement.

Targeted Pests : motile stages of mites, mites especially red spider mites, yellow mites, leaf miners larvae.

Targeted crops : ornamentals, cotton, citrus fruit, pome fruit, crops, vegetables, and potatoes.

Rate of uses: Please check the label or the Agronomist.

Athena 118EW



Bifenthrin 10% + Abamectin 1.8%

Acaricide / insecticide that contains two active ingredients.

Belongs to unique chemical group extracted from microorganisms. Compatible with Integrated Crop Management (IPM) programs.

Targeted Pests : motile stages of mites, especially red spider mites, yellow mites, leaf miners and psylla, leaf miners, suckers, and beetles.

Targeted crops : ornamentals, citrus fruit, pome fruit, crops, vegetables, and potatoes.

Rate of uses: Please check the label or the Agronomist.

Product under license from **FMC** International.

Acarizox

Concid

Hexythiazox

A non-systemic Contact acaricide that affects Eggs, Nymph, and Pupa Stages.

Rate of uses: Please check the label or the Agronomist.



Etox 110SC

Etoxazole 11%

Acaricide; works as contact and stomach action and has a vapor effect, which has the ability to penetrate the leaves as it moves from the top surface of to the lower surface due to the interfering property of the active substance, providing the highest possible protection of the leaf surface.

It has a mechanism for inhibiting the growth of spiders by eliminating the egg phase, the nymphs and the loss of females able to lay eggs.

Rate of uses: Please check the label or the Agronomist.

Slice 100EC

Fenpropathrin 10%

A non-systemic pyrethroid acaricide/Insecticide, that affects insects by contact and stomach action.

Target pests: spiders, whitefly, aphids, worms, thrips, and peach moths.

Target crops: tomato, eggplant, cucumber, pumpkin, potatoes, fruit trees.

Rate of uses: Please check the label or the Agronomist.

Daben 200EC

Rhameses 20WP



Pyridaben

Acaricide, contact effect used to control spiders with long residual activity ensure stability and high performance.

Rapid action, you will notice the dead mites within half hours after treatment.

Perfect control for all of mites' stages (eggs, nymphs and Larva).

Targeted spiders: such as: red spider, two-spot spider, citrus rust spider.

It also has a side effect on insects such as: white fly, thrips, leaf hoppers, and aphids

Rate of uses: Please check the label or the Agronomist.

Ortan 50EC

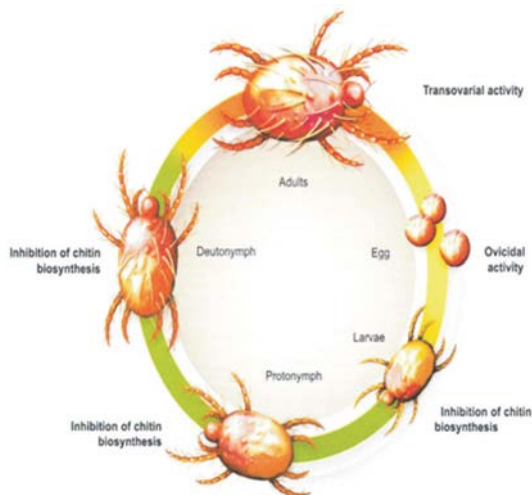
Feproximate 5%

Acaricide for adult spiders and have knockdown effect.

Targeted Pests : red spider mite, citrus rust mites, millei bugs.

Targeted crops : ornamentals, cotton, citrus fruit, pome fruit, crops, vegetables, and potatoes.

Rate of uses: Please check the label or the Agronomist.



Herbex 300SL**2,4-DB 30%**

Active ingredient: 4 (2,4-dichlorophenoxy) butyric acid.

Systemic herbicide for control of broadleaf weeds in alfalfa and alfalfa grown with grains

After germination in the form of a concentrated liquid.

Mechanism of action: systemic effect, selective for broad leaves weeds.

Hormonal system: the synthetic auxin causes deformations in the stem and leaf that lead to the death of the weeds. For alfalfa, some bends occur in the stem and leaves, and then the plant continues its normal growth.

The stability of the pesticide: between (5 - 9 PH) from 6.3 - 6.9 days respectively.

It is used in the fall, winter and early spring seasons (Below 35 ° C).

The main goal of treatment with this pesticide is: To combat the broad weeds, especially

Brassica Spp that attacks the alfalfa crop during this period.

The date of use for the botanical description of the crop:

Alfalfa crop; should be after the appearance of the first triple leaf, and before the fourth triple leaf appears, spraying is done after the first triple leaf appears.

Barley and Oats grown with Alfalfa should be from two leaves until the appearance of the first node.

Wheat planted with Alfalfa should be from three leaves until the first node appears.

Rate of uses: Please check the label or the Agronomist.

Bentox 480SL**Bentazone 48%**

Herbicide; selective post-emergence broadleaf weed control that follows the diazinon group, Contact with the vegetative of herbs and is also absorbed through the roots.

Target crops: corn, cereals, Alfalfa, potatoes, sorghum, Beans, Peas, Garlic, onions, Ornamental plants, and grass beds.

Rate of uses: Please check the label or the Agronomist.



Bromox 280EC

Bromoxynil 28%

Belongs to Hydroxy benzonitrile Group.

Selective contact post-emergence herbicide with some systemic activity. Absorbed by the foliage, with limited translocation for control broad leaves weed.

Mode of action: selective, contact herbicide.

Targeted weeds: annual broad-leaved weeds, especially young seedlings of the Polygonaceae, Compositae, and certain Boraginaceae, in cereals and non-crop land.

Rate of uses: Please check the label or the Agronomist.

Weedmaster 240EC

Bromoxynil Octanoate 12.5 + Ioxynil Octanoate 7.5% + Diflufenican 4%

Selective herbicide after germination with residual effect in the form of an emulsifiable concentrated liquid for extended control of broad-leaved annual weeds in wheat, barley and thin-leaf crops.

It contains three active ingredients that work together with a cooperative property and provide high and regular efficacy.

Diflufenican: works by contact as an inhibitor of the process of building carotenoids (organic pigments present in plants).

Two ingredients active: Bromoxynil and Ioxynil; they act by contact after germination of weeds to inhibit the processes of respiration and photosynthesis to effectively control the elimination of weeds.

This unique composition of the pesticide allows rapid penetration into the tissues of weeds and ensures regular effectiveness even in unstable conditions.

The weeds lose their green color and die within 2-3 weeks of spraying.

Targeted Crops : Soft winter wheat varieties, durum wheat and barley have proven good tolerance to the pesticide, and temporary discoloration may appear on the plant, but it quickly disappears without any effect on plant growth or production.

A distinct pesticide that is stable and effective for several weeks after spraying to control any weeds that may germinate after spraying.

Targeted weeds : annual leaves weeds such as; Malva Spp, Knotgrass, Brassica Spp, Bind Weed, Wild Radish, Common Purslane and others.

Rate of uses: Please check the label or the Agronomist.



Marval 240EC

Clethodim 24%

Selective systemic herbicide after germination to control annual and perennial thin weeds in broad-leaf crops.

Mode of action: It is characterized by high selectivity for broad-leaved plants; This ensures optimal control of thin weeds without affecting the main crop, as the pesticide is absorbed through the leaves to move and concentrate in the rapidly growing meristematic cells, eliminating the upper and lower parts of the weeds, preventing their growth again as the weeds stop growing within a week of application and then the new growths turn brown. They rot and die, while the old growths turn orange and purple before they die.

Target crops: alfalfa and vegetables such as: potatoes, tomatoes, onions, watermelons, carrots and other vegetables, as well as fruit trees and ornamental plants.

Targeted weeds: annual and perennial weeds such as: Cynodon, Ray Grass (Lolium), Oat, Sorghum halepen.

Rate of uses: Please check the label or the Agronomist.

Fushan 125EC

Fluazifop-P-butyl 12.5%

A systemic selective herbicide for controlling grasses.

It is used after germination in broad-leaf crops.

A systemic herbicide that is quickly absorbed through leaf surface, and translocated through the phloem and xylem, accumulating in rhizomes and stolons of perennial grasses and meristems of annual and perennial grasses.

It is absorbed through the leaves and then moves towards the growing summit and the rest of the underground parts to control grass.

Targeted grass weeds: (Flares, Apera, foxtail) as well as perennial grasses.

Target crops: Broad-leaf vegetables, onions, carrots, sugar beet, alfalfa, potatoes and orchards of fruit crops.

Rate of uses: Please check the label or the Agronomist.



Weedex 200SL

Glufosinate-ammonium 20%

A general non-selective systemic herbicide, used after germination for annual & perennial grasses and broad-leaved weeds.

Success in weed control and disposal depends on the efficiency of application, weather conditions, size of weeds, rate of application, and time of application of the pesticide.

Under optimal growing conditions, the initial effects are yellowing within 2-3 days, and weeds usually die within 10-14 days and this depends on several conditions and factors previously mentioned.

To ensure better results, spreading and adjuvants materials can be added to increase the absorption of the pesticide through the vegetative growth of the herbs.

Rate of uses: Please check the label or the Agronomist.

Best stopper 480 SL



Glyfodin 480 SL

Spectra 480SL

Tiller 480SL

Glyphosate IPA

A general non-selective systemic herbicide, used after germination for annual & perennial grasses and broad-leaved weeds.

Mode of action: by absorbing the pesticide through the leaves and other aerial parts of the herbs.

Success in weed control and disposal depends on the efficiency of application, weather conditions, size of weeds, rate of application, and time of application of the pesticide.

To ensure better results, spreading and adjuvants materials can be added to increase the absorption of the pesticide through the vegetative growth of the herbs.

Targeted weeds: broadleaf annuals and thin and perennial herbs.

It is used in open areas not cultivated with crops and orchids and is used to kill the vegetative growth before harvest for some crops.

It is also used as a spray on the surface of the soil before germination of the main crop, as :potatoes and onions crops.

Inactive on contact with soil.

Application rate: 4-8 liters / hectare after weed germination.



Succeed 240SL

Imazethapyr 24%

A selective herbicide belonging to the Imidazolinone group

Herbicide used to control a variety of broad-leaved weeds.

Succeed 240SL has a side effect on fine weeds in many crops.

Target crops: Alfalfa, beans, peas, groundnuts, and soybeans.

Succeed 240SL mode of action: it works in a systemic manner with contact and residual effect. Inhibits the formation of plant amino acids (acetohydroxyacid synthase AHAS).

Succeed 240SL is absorbed after spraying through the roots and leaves of weeds and quickly reaches the growing tops.

Mechanism of application: Succeed 240SL used to control broad-annual weeds and some of grass when the second leaf of a new alfalfa appears, or immediately after harvest (after the first irrigation) of the old alfalfa.

Rate of uses: Please check the label or the Agronomist.

Mendor 480SC

Metribuzin 48%

Selective, systemic herbicides, pre and postemergence controlling many annual and perennial broad-leaved weeds and grassy annual weeds.

Target crops: tomatoes, potatoes, carrots, alfalfa, maize, wheat and barley.

Do not spray on the crops of the Brassicaceae, Cucurbitaceae, lettuce, sunflower, strawberry, sweet potato, onion, and sugar beet.

Mode of action: It has a double property to destroy weeds before and after germination or the stage of their emergence on the soil surface directly; Absorbed mostly by the roots, but also by the leaves, with translocation acropetally in the xylem. Photosynthetic electron transport inhibitor at the photosystem II receptor site.

It controls the weeds on wasteland that will be seedling the seeds with; maize, tomatoes, wheat or alfalfa, taking in consideration the suitable safe period mentioned on the technical flyers before starting to plant crops after treatment.

Rate of uses: Please check the label or the Agronomist.



Pendot Aqua 450CS



Penmort 330EC

Stop 500EC

Amid 330EC

Pendimethalin

A specialized pre-germination herbicide of a broad spectrum for controlling most thin-leaved annuals and many broad-leaf weeds.

Mode of action: It is absorbed through the roots and leaves, and the affected plants die immediately after germination or upon contact with the soil surface.

It has an extended and residual effect, which provides protection for a long time and prevents the growth of weeds during the season.

It is used before planting, before germination, before transferring seedlings, or at any early time after germination, depending on the type of crop.

Application to some crops: Wheat, barley: before the crop germination.

Onions, leeks: before crop germination or before seedling transplantation.

Carrots: before the crop germinates.

Flower, cabbage, broccoli: before seedling.

Strawberry: after flowering and before the fruiting cluster.

Potato: before crop germination, immediately after planting.

Spray the pesticide before the germination of wheat and weeds, preferably within 1-7 days of sowing.

Rate of uses: Please check the label or the Agronomist.



Control 960EC**S-metolachlor 96%**

A selective herbicide that control grass and broad-leaved weeds during their germination and Saad grass (Saadia).

Control 960EC: Can be used before planting, by spraying it on the surface of the soil and mixing it either by plowing.

Control 960EC: Can be sprayed after planting the crop and before the weeds germinate. In this case, to get good results to resist weeds, adjuvant surfactants are added to it.

Rate of uses: Please check the label or the Agronomist.

Authority 480SC**Sulfentrazone 48%**

A new and unique selective systemic herbicide before germination produced by **FMC** International.

The perfect solution for stubborn weeds.

Specializes in controlling broad and thin leaf weeds that have acquired the characteristic of immunity against many different chemical groups.

Mode of action: It is sprayed on the surface of the soil and then absorbed by the newly germinated seeds or seedlings into the plant tissue.

Authority accepts mixing with herbicides containing Glyphosate or Pendimethalin.

Rate of uses: Please check the label or the Agronomist.

Fusban Plus 125EC**Quizalofop-P-ethyl****Miracle 40 OD****Nicosulfuron**

Nema Free 16%

Cinnamaldehyde 1.6%

Natural material extracted from plants and herbs 100%, so it is safe for human health and the environment. A liquid Nematicide in the form of a water-soluble concentrate.

The possibility of using this biological Nematicide before and after planting, in all stages of growth, as well as before and after infection.

Advantages of Nema Free Biocide:

A Nematicide; used in organic crops, as it is a natural product that has no toxic effect inside the plant.

Nema free: pesticide specialized to eliminate root-knot nematodes that infect vegetables and fruits.

Rate of uses: Please check the label or the Agronomist.

THIAFOS 500EC

Fosthiazate 50%

Pesticide type: Insecticide, Nematicide, Organophosphate

Description: A soil applied nematicide and insecticide used to control nematodes, and side effect on sucking / chewing ground insect and foliar insect pests such as: aphids, mites, thrips, whiteflies, bugs and beetles.

Mode of action: Systemic. Cholinesterase inhibitor.

Acts against motile larval stages of nematodes in the soil and prevents their invasion to roots of crops.

- The control activities of THIAFOS 500 EC: Remain unaffected by the soil types, soil pH, soil temperature and moisture.

Is recommended for use as part of Integrated pest Management (IPM).

Application time: 3-6 days before sowing or transplanting the seedlings.

Application thru: Irrigation system.

Rate of uses: Please check the label or the Agronomist.

Note: The field is not cultivated after treatment with THIAFOS 500 EC, Only planting after 3-6 days, for cucumber crops, it is preferable to plant after ten days.

NEMAX 20SC

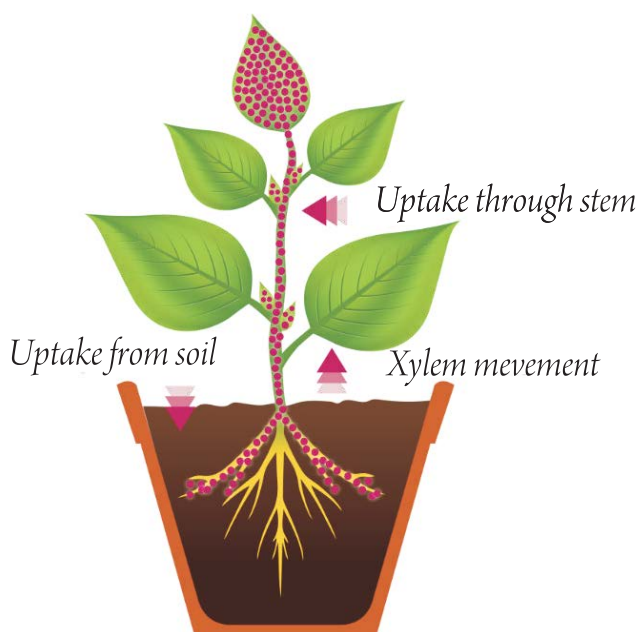
Abamectin

Pesticide type: Nematicide act by stomach action and has slight contact effect.





PLANT GROWTH REGULATORS



PreStage 8SL

Forchlorfenuron 0.8%

A plant growth regulator that works on:

Induces the formation and development of buds and speeds up the break of the dormancy period.

Stimulates the flowering process of grape trees.

Increase the flowering and fruits set, and the size of the grapes in terms of the size and weight of the cluster, and total yield.

Promotes cell division and strengthening cell walls.

It prolongs the ripening period fruit (delays ageing period).

Regulates the transport of nutrients to the fruits and promotes the formation of fruits.

Target crops: Grapes, kiwi fruit, peaches, apples, melons, cucumbers, potatoes, pumpkins, and wheat.

Q-Set

Naphthaleneacetic Acid (NAA) 0.45% & Naphthaleneacetamide (NAAm) 1.2%

Q-Set - Plant Growth regulator (PGR) as SP water soluble powder.

Q-set - Helps plants get rid of the influence of difficult conditions such as frost and high temperature.

Q-Set - To induce flowering, prevent premature flower and fruit drop and improve fruit setting in squash, melons, watermelon, tomato, eggplant, apples, pears, grapes, guavas, mangoes, citrus fruits, olives, etc.



Gibberoll 100T

Gibberellic Acid 10%

Gibberoll 100T : Gibberellic Acid 10%(w/w) tablets.

Gibberoll 100T : A natural growth regulator for plant growth.

Gibberoll 100T : Contains gibberellic acid; Which helps to increase the fruits set and improve their quality.

Gibberoll 100T: As a water-soluble tablet.

Gibberoll 100T: The solution is to be used as a spray on the plant.

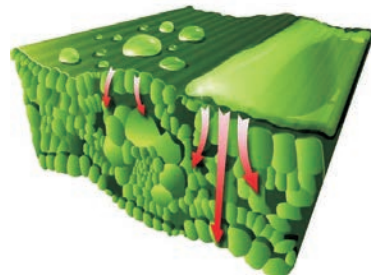
Gibberoll 100T: It increase the fruits set, increase the date of harvest, improves the characteristics of fruits in fruit trees and vegetable crops, and lengthens the stem of some vegetables such as: celery and watercress.

Gibberoll 100T : A plant growth regulator (PGR) with a variety of applications, e.g. to advance flowering; improve fruit setting; loosen and elongate clusters; increase berry size; produce brighter-colored firmer fruits; increase fruit size; control fruit maturity and increase the yield in grapes, strawberries, blueberries, sweet cherries lemons, clementine, tangelo, tangerines and pears. And to break dormancy and stimulate sprouting in seed potatoes; to extend the picking season by hastening maturity in artichokes.





Adjuvant Surfactants



Captain 20CS

pH Regulator

Captain is a pH regulator, Wetting, and Spreading agent a diffuser that neutralizes the acidity of the spray water to obtain a homogeneous mixing and high efficacy of pesticides and fertilizers. It also improves the penetrability of the leaves and reduces the surface tension of the spray water, thus reducing the amount of solution waste.

It is used with very distinct effectiveness with a wide range of agricultural pesticides and has the property of full and rapid spread on plant surfaces and this allows the following:

Captain raises the efficiency of the pesticide in terms of controlling the pH of the spray solution.

Captain works to regulate the mixing process when using two or more pesticides in terms of stability and no residue will be formed during the mixing process.

Use the minimum recommended doses of pesticides with high efficiency.

Getting very effective of the pesticide.

Reducing the effect of washing, as Captain helps the pesticide penetrate and spread quickly.

Green Turf

Turf Colorant

A grass colorant used to color tired, discolored, and yellow turf during cold weather, is well known for use in private and public gardens, football grounds and golf courses.

Turf Liner

Turf Colorant (W/Y)

Used as colored to mark lines and borders on turf in sport playgrounds and public and private gardens.

Turf Liner; White / Yellow is highly stable not wash by irrigation or rainwater.

InGo Advance

Polyether Modified Polysiloxane (24% W/V)

Super Wetter/Spreader / Penetrant/ Surfactant.

InGo 200 represents new generation of non-ionic surfactant for use with wide range of Agrochemicals.

Ingo 200 allows spray solution to spread and penetrates plant surfaces instantly which allow using lowest recommended rate of agrochemicals efficiently.

Maximizing instant effect of agrochemicals and decreasing effect of wash and run of spray solutions. As a result, effected by prompt penetration.



KEKKILÄ PROFESSIONAL

Kekkila is one of the word important producer of soil substrates.

Kekkila products are well know in the farming sector nurseries and well in landscaping.

Kekkila offer a wide range of products according to:

Texture and various additives (fertilizer quantity added).

pH level.

Limestone.

Ideal for:

Plant Propagation.

Forestry Nurseries.

Nursery Stock.

Vegetables & Ornamental Seedlings.

KEKKILÄ PROFESSIONAL



OUR PARTNERS



BASF

We create chemistry



FMC

KEKKILÄ

MONSANTO



agröstulln





Astra Industrial Complex Co., Ltd.
for Fertilizer & Agrochemicals “**ASTRACHEM**”
Dammam 2nd Industrial City, P.O.Box 30447 Alkhobar 31952
Riyadh Office: Malaz - P.O.Box 54061 Riyadh 11514
Tel.: +966 11 4772346 Fax: +966 11 4782102
Kingdom of Saudi Arabia

www.astrachem.net

أسترا الصناعية
astra industries 